

GN 277 | Pivoting connecting clamps

Aluminium



- 1
- 2
- 3
- 4
- 5
- 6
- 7
- 8
- 9
- 10
- 11
- 12
- 13
- 14
- 15
- 16
- 17
- 18**
-

MATERIAL

Aluminium, matte finish.
AISI 304 stainless steel screws and nuts.

STANDARD EXECUTIONS

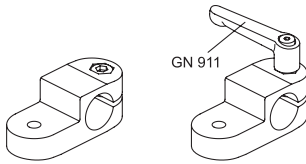
Surface finish index:
- **BL**: natural colour.
- **SW**: epoxy resin coating resistant to UV rays, RAL 9005 black colour.

FEATURES AND APPLICATIONS

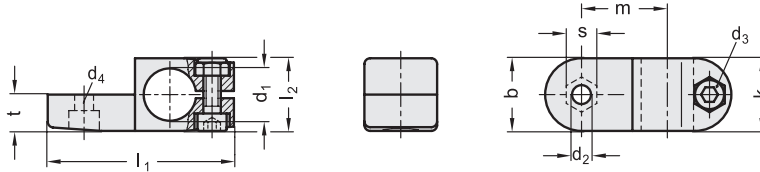
The assembly hole of GN 277 connecting clamps allows an excellent match with tubes GN 990 (see page 1368).

GN 277 connecting clamps can be assembled with connecting clamps GN 271 (see page 1341), GN 273 (see page 1343) or GN 275 (see page 1346).

The clamping screw d3 may be replaced by clamping kit GN 911 (see page 1372).



Conversion Table	
1 mm = 0.039 inch	
d1	
mm	inch
12	0.47
14	0.55
16	0.63
18	0.71



Code BL	Code SW	Description	b	d1	d2	d3	d4	k	l1	l2	m	t	s	d3 Clamping kit	△
GN.60011	GN.60016	GN 277-B12-2-*	25	12	6.5	M6	M6	25	64	25	29.5	12.5	10	GN 911-M6-22	63
GN.60031	GN.60036	GN 277-B14-2-*	25	14	6.5	M6	M6	25	64	25	29.5	12.5	10	GN 911-M6-22	60
GN.60051	GN.60056	GN 277-B16-2-*	25	16	6.5	M6	M6	25	64	25	29.5	12.5	10	GN 911-M6-22	59
GN.60071	GN.60076	GN 277-B18-2-*	25	18	6.5	M6	M6	25	64	25	29.5	12.5	10	GN 911-M6-22	56

Connecting clamps

2

* Complete the description of the standard item needed by adding the finish of the connector clamps: BL (blank) or SW (black).